



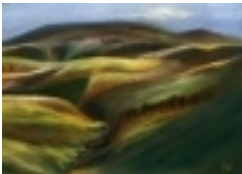
Brian Rogers imagery

Brian Rogers Imagery - Photographer and Artist in North Northumberland

Brian Rogers Imagery

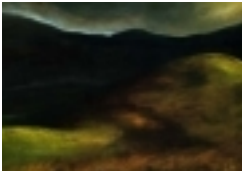
Browse

[ART GALLERY 2](#)



Cheviot Hills
£15.00

Pastel. "Cheviot Hills" It depicts the hills and valleys between The Cheviot and an old drovers road on the Scottish side of the border. [\[Product Details...\]](#)



Great Hetha and Little Hetha hillforts
£15.00

Acrylic. Great Hetha and Little Hetha hillforts located in the College Valley, Cheviot Hills. [\[Product Details...\]](#)



Harthope Linn Cheviot Hills
£15.00

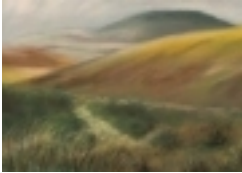
Pastel. "Harthope Linn". Located in the Harthope Valley, this waterfall is not easily seen as it is surrounded by trees. [\[Product Details...\]](#)



Holy Island Boat

£15.00

Watercolour. 'Holy Island Boat' Fishing boat with Lindisfarne Castle in the background. [\[Product Details...\]](#)



Hownam Law Cheviot Hills

£15.00

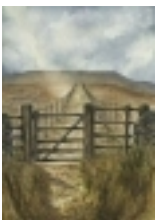
Pastel. "Hownam Law". An unmistakable hill, topped with a hillfort on the Scottish side of the Cheviots. On the lower slopes can be seen the derelict farm of South Cote. [\[Product Details...\]](#)



Linhope Spout Cheviot Hills

£15.00

Watercolour. "Linhope Spout" Waterfall near the head of the Breamish Valley in the Cheviot Hills. [\[Product Details...\]](#)



The Border Fence Cheviot Hills

£15.00

Watercolour. 'The Border Fence'. A familiar landmark to those undertaking the Pennine Way long distance footpath. Is it 'no man's land' beyond the gate? The sky and the shaft of sunlight emphasise the changing conditions of this area. [\[Product Details...\]](#)