



Brian Rogers imagery

Brian Rogers Imagery - Photographer and Artist in North Northumberland

Brian Rogers Imagery

Browse

[ART GALLERY 1](#)



Belford at Christmas
£15.00

Watercolour. 'Belford at Christmas'. The Blue Bell Hotel is the centre of our village. Trying to photograph it with no traffic is almost impossible. So paint it! [\[Product Details...\]](#)



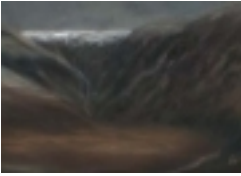
End of the Pilgrimage
£15.00

Watercolour. Approaching the end of the Pilgrims' causeway which crosses the sands to Holy Island. [\[Product Details...\]](#)



Simonside Rock
£15.00

Pastel. "Simonside Rock". The sandstone rocks that make up the area around Simonside have been worn by the elements into some beautiful shapes. [\[Product Details...\]](#)



The Bizzle Cheviot Hills

£15.00

Pastel. "The Bizzle" This dark and forbidding place consists of the Bizzle Craggs and the Bizzle Burn draining off the north side of The Cheviot. On the top are remains of two World War 2 crashed aircraft. [\[Product Details...\]](#)



The Hen Hole Cheviot Hills

£15.00

Watercolour. This mysterious valley drains water from the western side of The Cheviot into the College Burn and the fantastic College Valley.. [\[Product Details...\]](#)



West Hall Belford

£15.00

Watercolour. 'West Hall, Belford'. This image also appears as the 'December' picture in the 2010 Bell View, Belford calendar. [\[Product Details...\]](#)